

Kickoff Meeting
Salt & Nutrient Management Plan (SNMP)
for
Groundwater Basins Within
Upper Los Angeles River Area (ULARA)

November 19, 2013 9:00am to 11:00am

Location:

LADWP Valley Center
14401 Saticoy Street – Bldg 7 2nd Floor, Van Nuys, 91405

AGENDA


<u>Item</u>	<u>Lead</u>	<u>Approximate Start Time</u>	<u>Approximate Duration</u>
Sign-In	Facilitator	9:00am	30 Minutes
Introduction & Opening Remarks	Facilitator	9:30am	10 Minutes
ULARA and its Groundwater Basins	Watermaster	9:40am	20 Minutes
Overview of SNMP Programs	LARWQCB	10:00am	20 Minutes
Development of SNMPs for ULARA	Assistant Watermaster	10:20am	15 Minutes
Questions	Facilitator	10:35am	25 Minutes

What and Where is ULARA

Presented at the Kickoff Meeting
for the
Salt & Nutrient Management Plan (SNMP)
For ULARA


November 19, 2013

Presented by:
Richard C. Slade
ULARA Watermaster



Definition: Upper Los Angeles River Area (ULARA)

- A. An area created by adjudication in the case of City of Los Angeles vs. City of San Fernando, et al.
- B. Key results of Court Judgment dated January 1979
 - Defined the watershed boundaries
 - Identified 4 Groundwater Basins within ULARA
 - Established Parties to the Judgment
 - Established pumping rights for those Parties
 - Created a Court-appointed Watermaster.



Definition:

Upper Los Angeles River Area (ULARA) cont.

C. ULARA Boundaries

- Includes upper portion of the Los Angeles River and its tributaries
- Includes 4 Groundwater Basins (aka, Valley Fill Areas)
- Total ULARA Surface Area = 328,500 acres
- Total Surface Area of Groundwater Basins = 122,800 acres
- Total Surface Area in Watershed = 205,700 acres



Definition:

Upper Los Angeles River Area (ULARA) cont.

D. Principal Parties to the Judgment

- City of Burbank
- City of Glendale
- City of Los Angeles
- City of San Fernando
- Crescenta Valley Water District



ULARA Groundwater Basins

- San Fernando
- Sylmar
- Verdugo
- Eagle Rock

Total surface area of these four groundwater basins (i.e., the Valley Fill, VF) = 122,800 acres

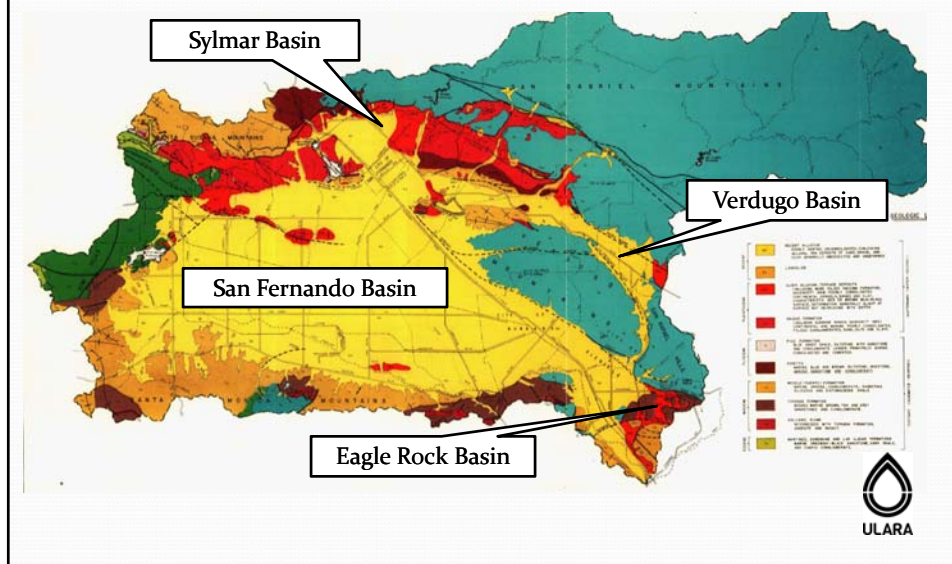
Note: These court-adjudicated groundwater basins are considered separate for the purposes of the Judgment. State DWR (Bulletin 118, Update 2003) includes all 4 of these basins within its “San Fernando Valley Groundwater Basin”.



Boundary of ULARA

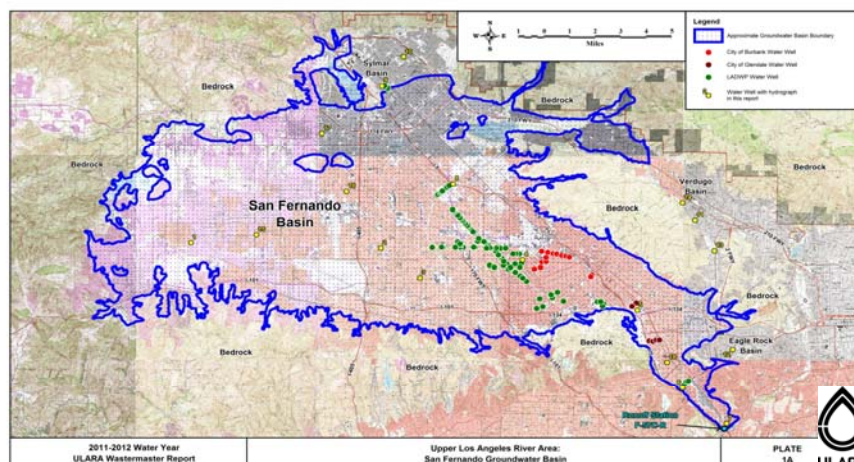


Geologic Map – Report of Referee



San Fernando Basin

- Burbank, Glendale & Los Angeles wellfields
- Safe Yield Value (90,680 AF/yr)
- EPA Involvement and Superfund sites
- Surface Area: 112,000 acres (91.2% of total VF area)



2011-2012 Water Year
ULARA Watermaster Report

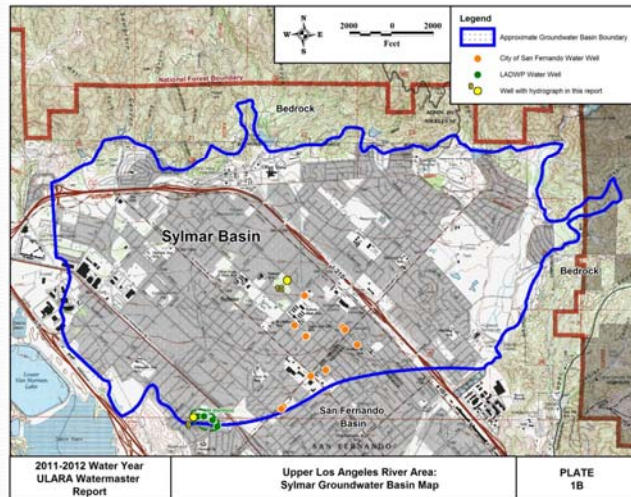
Upper Los Angeles River Area:
San Fernando Groundwater Basin

PLATE
1A



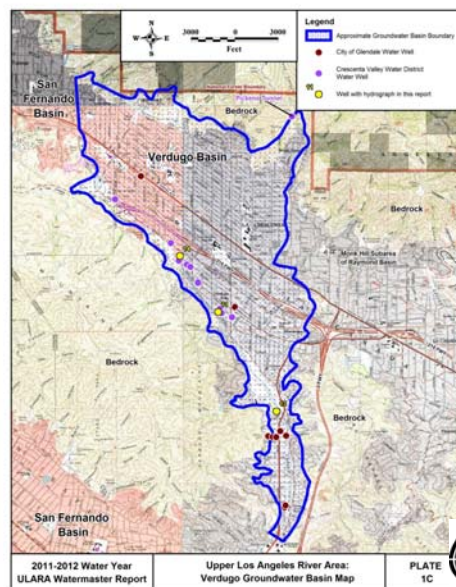
Sylmar Basin

- Los Angeles & San Fernando wellfields
- Safe Yield Value: 7140 AF/yr; split 50/50
- Surface Area = 5,600 Acres (4.6% of total VF area)



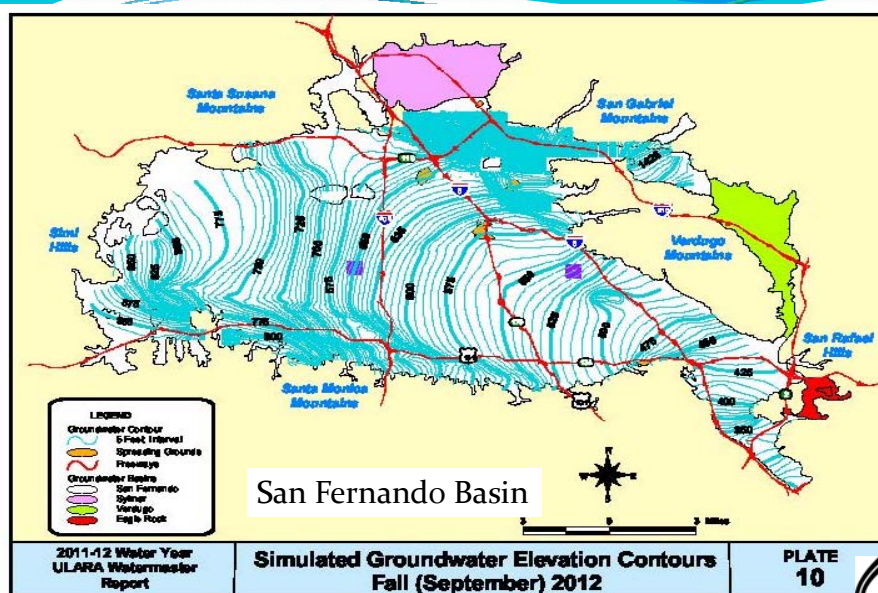
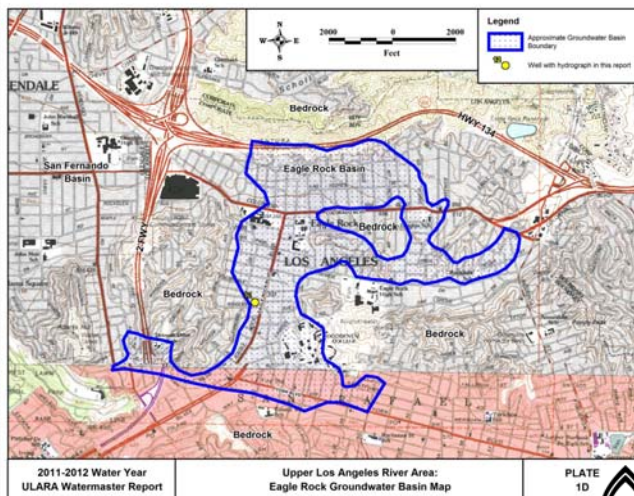
Verdugo Basin

- Wells owned by CVWD & Glendale
- Safe Yield Value: 7150 AF/yr; split \pm 50:50
- Surface Area = 4,400 Acres (3.6% of total VF area)



Eagle Rock Basin

- No municipal-supply water wells
- No measurable native Safe Yield Value
- Surface Area = 800 Acres (0.6% of total VF area)



Contact Information

Richard C. Slade, Watermaster

Slade@ULARAwatermaster.com

<http://www.ULARAwatermaster.com>



Overview of Salt and Nutrient Management Plan (SNMP)

Los Angeles Regional Water Quality Control Board

Presentation for the ULARA Watermaster Public Information Meeting

November 19, 2013

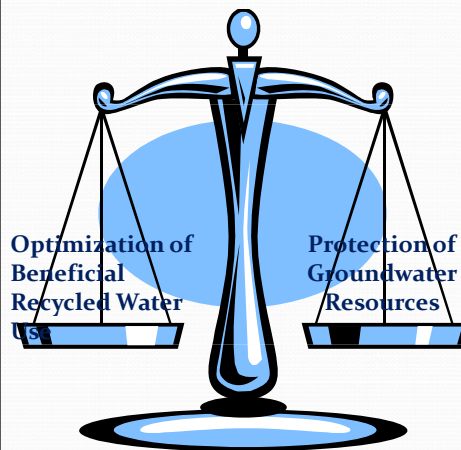
The Recycled Water Policy



- Adopted February 2009
- Supports Strategic Plan
Priority to promote sustainable local water supply
 - Optimize recycled water use
- Ensure long term beneficial use of water
 - Protect basin water quality

Los Angeles Regional Water Quality Control Board

The Recycled Water Policy - 2



- Policy recognizes that increased Recycled Water Use may increase pollutant loading to groundwater basins
- Policy achieves balance through Salt & Nutrient Management Plan requirement

Los Angeles Regional Water Quality Control Board

Salt and Nutrient Management Plan

- **SNMP Requirements:**
 - Locally driven and controlled collaborative stakeholder-led process
 - Every Basin/Sub-basin within the state
 - Address Water Quality Concerns
 - Basin-wide monitoring programs
 - Annual CEC Monitoring
 - Water Recycling/Stormwater Recharge
 - Source Identification/Assimilative Capacity/Loading
 - Implementation Measures
 - Antidegradation Analysis
 - Other Considerations
 - Compliance with CEQA

Los Angeles Regional Water Quality Control Board

Stakeholder Process



- Collaborative process
 - Local water and wastewater entities
 - Local salt/nutrient contributing stakeholders
 - Open to all stakeholders
- Locally driven and controlled
- Stakeholder funded
 - Including compliance with CEQA
- Regional Board Participation

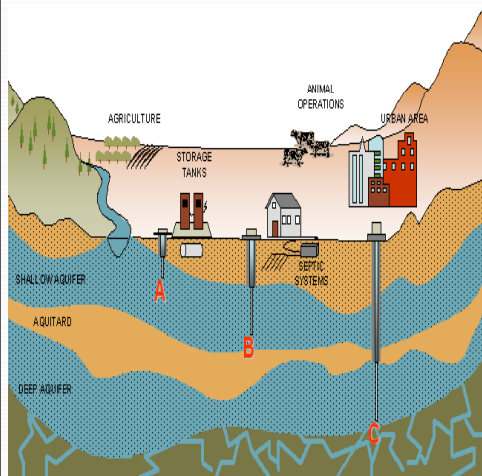
Los Angeles Regional Water Quality Control Board

Salt and Nutrient Management Plan (SNMP) Requirement

- SNMPs for every basin/sub-basin in the state
 - Consistent scope, detail dependent on site-specific factors
 - May address constituents other than salts and nutrients
 - Inclusion of stormwater recharge/ reuse component is critical
 - Completion by 2014
 - Implementation measures to be considered by Regional Water Boards as potential Basin Plan Amendments

Los Angeles Regional Water Quality Control Board

Basin wide Monitoring



- Determine Basin Water Quality
- Focus on supply wells and recycling projects
- Target groundwater-surface water connectivity
- Identify Responsible Parties

Los Angeles Regional Water Quality Control Board

Constituents of Emerging Concern (CECs)



- Annual Monitoring Provision
- Pharmaceuticals, personal care products, hormones, etc.
- Monitoring requirements as specified in amendment to Recycled Water Policy

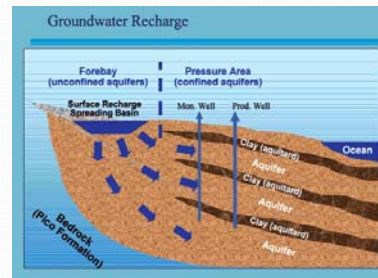
Los Angeles Regional Water Quality Control Board

Water Recycling/ Stormwater Recharge

- Water Recycling
 - Increasing use over 2002 levels
 - Potable water substitution

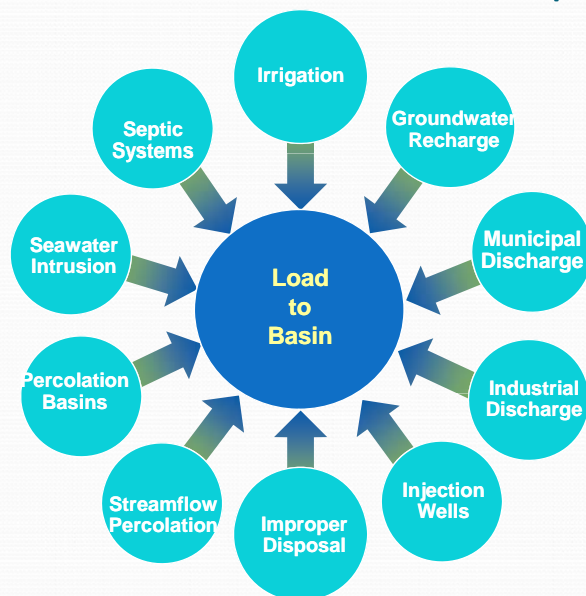


Los Angeles Regional Water Quality Control Board



- Stormwater Recharge
 - Lower salt and nutrient content
 - Augment water supplies

Source ID and Fate & Transport



Los Angeles Regional Water Quality Control Board

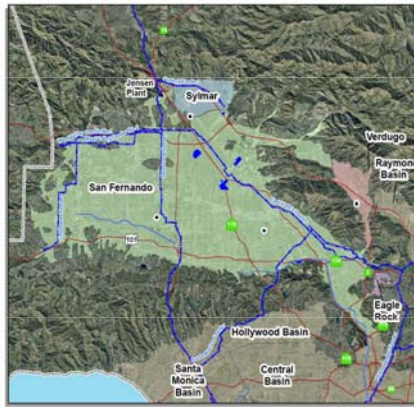
Implementation Strategies/ Anti-degradation/CEQA Analyses

- Implementation Strategies
 - Pollution prevention, source load reduction, treatment and management, stormwater recharge, increased recycled water use
- Anti-degradation Analysis
 - Where strategies measures impact water quality
 - Maximum benefit analysis
- CEQA Analysis
 - Programmatic Level (not project-specific)
 - Consider alternative management strategies
 - Develop mitigation measures for potential impacts

Los Angeles Regional Water Quality Control Board



Water Quality Concerns in the SFV Basins



- What are the beneficial uses?
 - Municipal/domestic supply (MUN), Industrial service supply (IND), industrial process supply (PROC), Agricultural supply (AGR)
- Basin Plan Salt and Nutrient Objectives
 - TDS, SO_4^{-2} , Cl^- , Boron, Nitrogen
- What are the primary water quality issues?
 - Nitrates (NO_3^-), sulfates (SO_4^{-2})
 - Volatile organic compounds (VOCs) – PCE, TCE
 - Heavy metals (e.g., hexavalent chromium)

Los Angeles Regional Water Quality Control Board

Stakeholders' Role

- Compile existing data
- Identify and fill data gaps
- Develop Salt & Nutrient Management Plan
 - Implementation & mitigation measures
 - Monitoring program
- Conduct antidegradation (where necessary) and CEQA analysis

Los Angeles Regional Water Quality Control Board

Regional Board's Role

- Facilitate interaction and information sharing
- Regulatory Assistance on SNMP Requirements
- Technical and Regulatory Oversight
 - Maintain consistency in scope and content
 - Ensure Compliance with Policy Requirements
- Incorporate Implementation strategies into Water Quality Control Plan

Los Angeles Regional Water Quality Control Board

Regional Board SNMP Facilitation Efforts

- **SNMP Annual Stakeholder Workshops** – *Nov 2010, 2011, 2012, 2013*
- **SNMP webpage, E-mail subscription** – *Dec 2010*
- **Staff contacts for SNMP Stakeholders** – *Feb 2011*
- **Guidance Document clarifying SNMP Requirements of Recycled Water Policy** – *March 2012*
- **Participation in stakeholder planning process (multiple basins)** – *Continuous since 2010*

Los Angeles Regional Water Quality Control Board

Salt and Nutrient Management Plan

- Sources of additional information:

- Regional Board SNMP Webpage:
 - http://www.waterboards.ca.gov/losangeles/water_issues/programs/salt_and_nutrient_management/index.shtml
- E-mail List Subscription:
 - http://www.waterboards.ca.gov/resources/email_subscriptions/reg4_subscribe.shtml
- GAMA Website:
 - http://www.waterboards.ca.gov/water_issues/programs/gama/
- SWRCB Recycled Water Policy:
 - http://www.waterboards.ca.gov/water_issues/programs/water_recycling_policy/index.shtml

Los Angeles Regional Water Quality Control Board

Contact Information

- Steve Rowe, LA-RWQCB
 - (213) 576-6755
 - Steve.Rowe@waterboards.ca.gov
- Lawrence Moore, LA-RWQCB
 - (213) 576-6730
 - Lawrence.Moore@waterboards.ca.gov
- Ginachi Amah, LA-RWQCB:
 - (213) 576-6685
 - Ginachi.Amah@waterboards.ca.gov

Los Angeles Regional Water Quality Control Board

Questions?



dreamstime.com

Los Angeles Regional Water Quality Control Board

Salt & Nutrient Management Plan Development Upper Los Angeles River Area (ULARA)

Presented at the Kickoff Meeting
for the
Salt & Nutrient Management Plan (SNMP)
For ULARA

November 19, 2013

Presented By:
Anthony Hicke
Assistant ULARA Watermaster

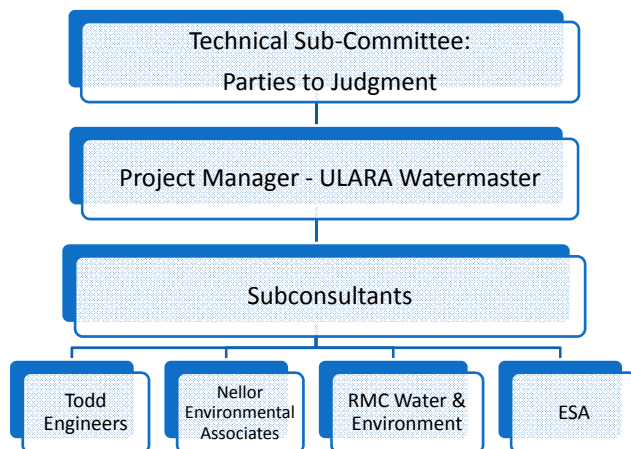


ULARA SNMP Discussion

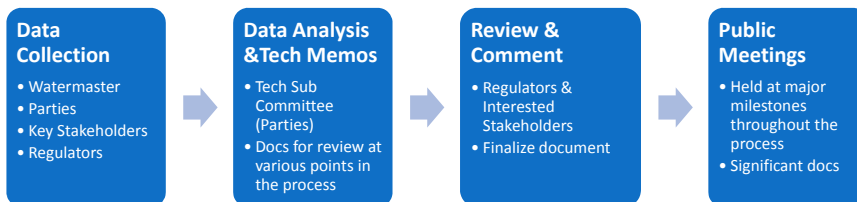
- Introduce Technical Team
- How will the Process Work?
- Introduce Elements of the Plan
- Current Status of our Work
- How to Stay Involved
- More Information



ULARA SNMP Technical Team



ULARA SNMP Process



GOAL: To gain consensus & “buy-in” from all parties involved at key points throughout the process



ULARA SNMP Plan

- Identify Salt and Nutrient (S/N) Water Quality Issues
 - Define “Baseline” groundwater quality
 - Characterize quality of imported water, recycled water, stormwater, etc.
 - Define what constituents will be managed
 - Example: VOCs and chromium not a part of SNMP
 - Handled by other agencies (EPA, DTSC, RWQCB, etc.)
- Estimate changes in S/N concentrations in the groundwater basins (GWB) due to current practices and projects
- Define management goals vs. monitoring goals
 - Create a Monitoring and Management Plan for S/N in ULARA GWBs
 - Create a Monitoring Plan for CECs in ULARA GWBs

ULARA SNMP Plan

- Estimate changes in S/N concentrations in the GWBs due to planned/future practices and projects
 - LADWP’s proposed San Fernando Valley Groundwater Remediation facilities
 - City of Los Angeles Groundwater Replenishment Project
 - Various stormwater infiltration projects, LID projects, etc.
 - Plans for increased recycled water use for irrigation in GWBs

Current Work

SNMP Team Roles

- Technical Sub-Committee
 - History: multiple organizational meetings with the “core group” (aka the “tech sub committee”) have occurred
 - LARWQCB has been kept abreast of these meetings
 - Tech subcommittee to perform most work/data collection
- Subconsultants - selected as of November 2013
 - RMC Water and Environment
 - Todd Engineers
 - Nellor Environmental Associates
 - Environmental Science Associates
 - Each has prior SNMP experience



Data Collection

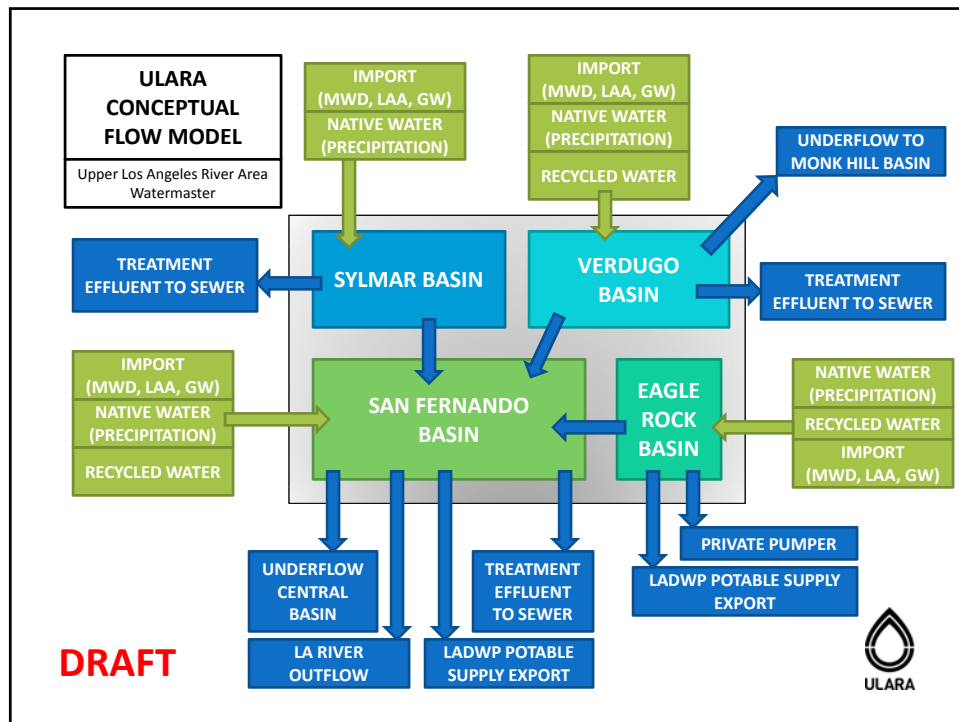
- Data collection ongoing
- Import/extraction volume data all well-accounted for due to annual Watermaster Reports
- Modeling input parameters from ULARA Report of Referee 1969
- Challenges to date:
 - Water quality data not in a central location
 - 10-year “look back” difficult due to data limitations for some Parties
 - Database limitation, paper data, etc
 - Imported water quality breakdown



SNMP Status - ULARA

- Public Outreach
 - Significant effort by Tech Subcommittee to notify key stakeholders and other interested parties
 - Email “blast” by RWQCB on behalf of ULARA Watermaster
 - Creation of email list based on experience of the Parties and their own mailing lists.
- Defining Key Concepts






How to Stay Involved

How to Stay Involved

- Join email list
 - SNMP@ULARAwatermaster.com
- Visit ULARA SNMP Website
 - www.ULARAwatermaster.com/SNMP
- Review technical documents as they become available
 - Will be available for download on the website
 - Emails will announce the posting of new documents
- Attend meetings
 - Significant Documents
 - Meeting agendas and notes will be available on the website



ULARA
 UPPER LOS ANGELES RIVER AREA WATERMASTER

www.ULARAwatermaster.com

[Welcome](#)
[About](#)
[ULARA Basins](#)
[Project Review/Data Requests](#)
[Document Library](#)
[Salt & Nutrient](#)
[Contact](#)

ULARA Salt & Nutrient Management Plan

Salt and Nutrient Management Plan Public Information Meeting

In accordance with the Recycled Water Policy adopted in February 2009 by the State Water Resources Control Board, a Salt and Nutrient Management Plan (SNMP) is being developed for the Upper Los Angeles River Area (ULARA) Groundwater Basins; this effort is being led by the ULARA Watermaster.

A public information meeting regarding the SNMP development will be held on November 19, 2013 at 9AM at the LADWP Valley Center in the Van Nuys area of the City of Los Angeles ([Click here for directions](#)). The Meeting will be held in the 2nd Floor Assembly Room of Building 7. If you are planning on attending the meeting, please RSVP by emailing your contact information to SNMP@ULARAwatermaster.com.

If you cannot attend, but are interested in receiving future ULARA SNMP updates, please also send an email to SNMP@ULARAwatermaster.com with your contact information asking to be added to our mailing list.

This web page can be accessed via www.ULARAwatermaster.com/SNMP. New information will be posted here when available.

For more information on Salt and Nutrient Management Plans, [click here](#).

If you have any questions, or would like to be added to the ULARA SNMP email list, please send us your contact information via email to SNMP@ULARAwatermaster.com.

ULARA SNMP Calendar

Public Information Meeting
 November 19, 2013 9AM
 LADWP Valley Center
 14401 Saticoy Street
 Los Angeles, CA 91405
 Bldg 7, 2nd Floor Assembly Room
[Click here for directions and other details](#)
 PLEASE **RSVP**.

Upcoming Meetings;
Documents for Review;
Review Deadlines.

More Information

- Burbank: www.burbankwaterandpower.com
- City of San Fernando: www.sfcity.org
- Crescenta Valley Water District: www.cvwd.com
- Glendale: www.glendalewaterandpower.com
- Los Angeles: www.ladwp.com
- Geotracker: www.geotracker.waterboards.ca.gov
- RWQCB SNMP Page:
www.swrcb.ca.gov/losangeles/water_issues/programs/salt_and_nutrient_management
- EPA San Fernando Valley:
yosemite.epa.gov/r9/sfund/r9sfdocw.nsf/vWSOAlphabetic?openview
 - Click on San Fernando Valley
- ULARA Watermaster: www.ULARAwatermaster.com

Contact Information

Anthony Hicke

Assistant ULARA Watermaster

Hicke@ULARAwatermaster.com

SNMP@ULARAwatermaster.com

<http://www.ULARAwatermaster.com>

<http://www.ULARAwatermaster.com/SNMP>





UPPER LOS ANGELES RIVER AREA WATERMASTER
Richard C. Slade - Watermaster

ularawatermaster.com

12750 Ventura Blvd, Suite 202
Studio City, CA 91604

818-506-0418 PHONE
818-506-1343 FAX

Question Card

Kickoff Meeting ULARA Salt & Nutrient Management Plan

November 19, 2013

Do you have any further questions question about the ULARA Salt and Nutrient Management Plan (SNMP) development process? Do you have any outstanding issues or concerns that you might want to be addressed/clarified?

Please fill out this form and fax to 818.506.1343, or email to SNMP@ULARAwatermaster.com.

Name: _____ Organization: _____

Phone: _____ Email: _____

Questions/Comments:

1.

2.